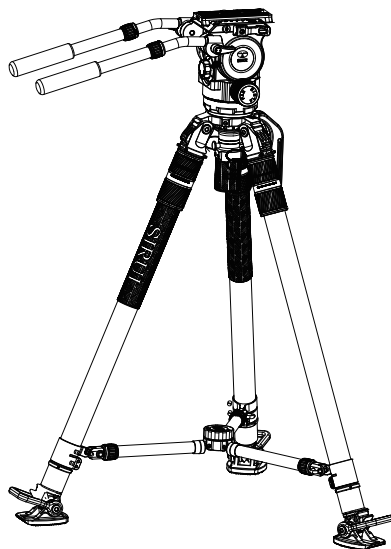


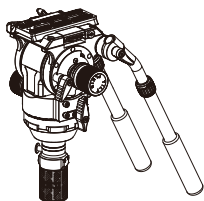


SIRUI

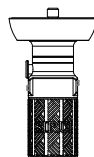
SVS75+SVH15 Video Tripod Kit User Manual



SVS75 +SVH15



SVH15



QH-75

Foreword

SVS75 Rapid System One-Step Height Adjustment Video Tripod with SVH15 Drag-Control Video Fluid Head and 75mm Half-Bowl Quick-Release Handle owns 6 patents, which is the most budget friendly professional tripod kit for the field of high image quality video productions.

Main Features

- (1) Quick release plate lock.
- (2) Stepless friction adjustment and smoothly operation at -40°C.
- (3) Adjustable panning and tilting twist locks. Pull out the lock for convenient direction adjustment.
- (4) Angle and length adjustable dual handle for excellent operation experience.
- (5) 7+0 steps of counterbalance can balance different camera weight from 4kg to 15kg.
- (6) 75mm quick release handle for convenient operation.
- (7) Both semi-auto fixed angle adjustment and stepless adjustment within a narrow range are available. And mid-level spreader can be added to increase stability.
- (8) Just pull the flip lock to set up and lock the tripod.
- (9) Horseshoe feet help increase stability of tripod. Tripod without horseshoe feet works well in various environment and is compatible with tripod dolly or other universal accessories.
- (10) 4mm Allen key is included. Rotate the 3/8"-16 screw to detach strap.

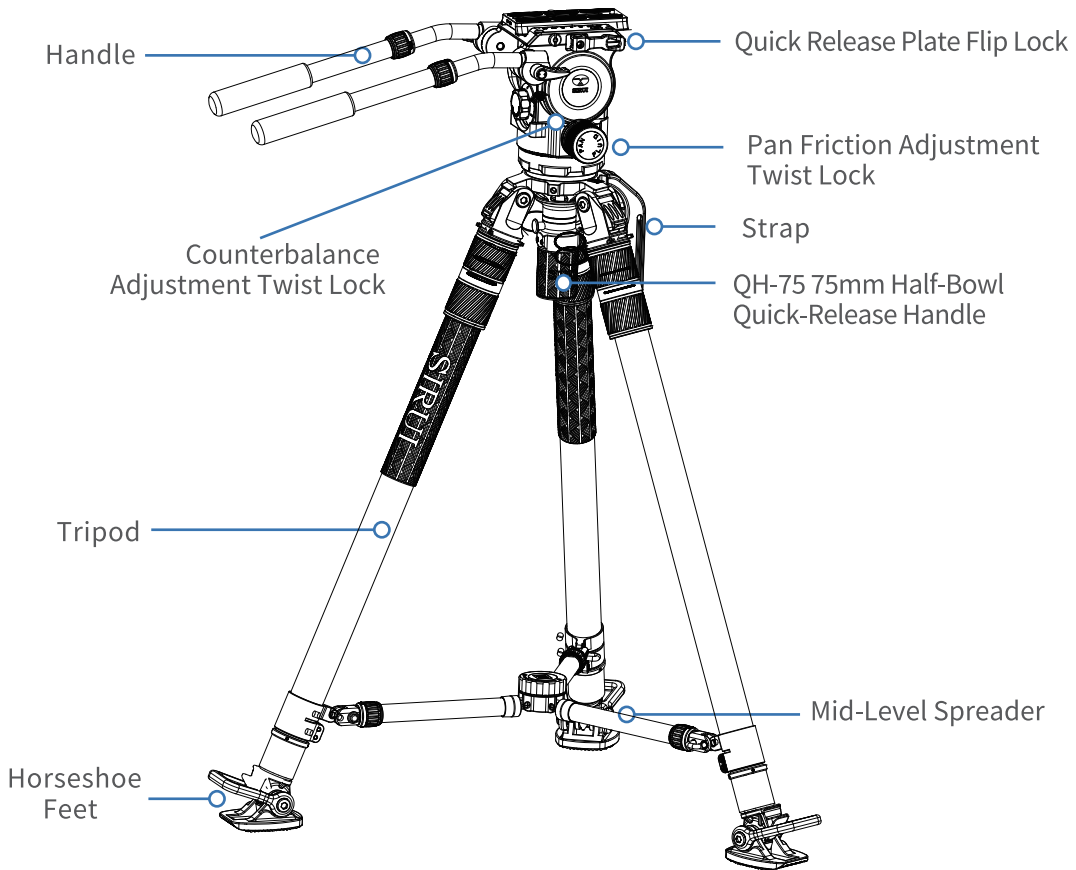
What's in the Box

SVS75 +SVH15 Version Tripod Kit



- | | | | |
|---|--------------------|----------------------|---------|
| 1 Tripod | 2 Video Fluid Head | 3 Mid-Level Spreader | 4 Strap |
| 5 QH-75 75mm Half-Bowl Quick-Release Handle | 6 Carrying Bag | | |

Names of Parts



(1) Angle Adjustment:

7+0 steps of counterbalance can balance different camera weight from 4kg to 15kg. $-70^{\circ}\sim+90^{\circ}$ tilting and 360° panning are allowed and you can pull out and change direction of the locking knob.



(2) NF Blocking Hydraulic Damping Design:

Separated and stepless friction adjustable panning and tilting twist locks are designed to balance different camera weight. Adjust the friction from - to +, fraction changing from weak to strong. And it ensures smoothly operating from -40°C to 60°C .



(3) Side Loading Quick Release Plate:

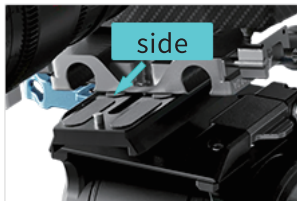
Insert: Open the flip lock, side load and lock the flip lock.

Detach: Open the flip lock, press the locking block and detach.

30mm back and forth range adjustment helps shoot with telephoto lens.



Open the flip lock



Side load



Lock the flip lock

When you mount DJI RS2/ RS3/ RS3 Pro Quick Release Plate on SVH15 video head, please detach one safety pin of the quick release clamp.

(4) QH-75 75mm Half-Bowl Quick-Release Handle:

SVH15 Head and QH-75 Half-Bowl Quick-Release Handle can be used separately. SVH15 head can be used onto slide rail and AH-75 handle is compatible with other flat head.



Detach:

Rotate the handle 2 turns, press the knob and pull out the handle.



Insert:

Insert the handle and rotate it 2 turns in an anticlockwise.

(5) Dual Handle:



Loosen the twist lock to adjust handle angle and increase operation experience.



Rotate the knob to adjust handle length.

SVS75 Operation Instruction

(1) One-Step Height Adjustment:

Loosen or tighten the twist lock on every tube leg according to the marking to adjust height with only one step.



(2) Angle Adjustment:

Press the semi-auto angle adjustment lock and lift the leg. Press the leg to a specific angle, and the lock reset automatically.



Semi-Auto Angle Adjustment

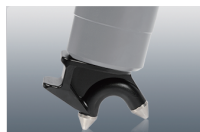


(3) Horseshoe Feet & Dual Spikes:

Pull the horseshoe feet to detach.



Horseshoe Feet

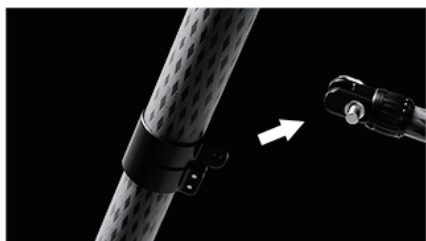
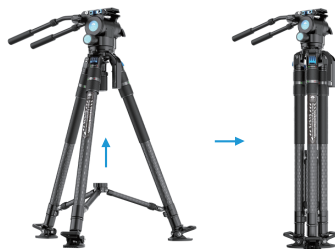


Spikes

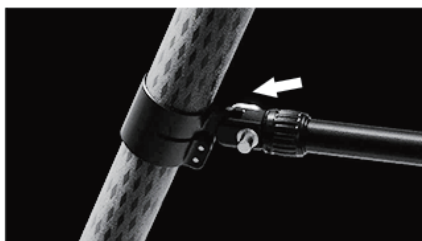
The tripod without horseshoe feet works well on soft ground. And it is also compatible with SIRUI DT-06 Tripod Dolly or other universal accessories.

(4) Mid-Level Spreader :

Press the button to mount and rotate the twist lock to extend or retract length of the spreader. Rotate the central knob and lift the spreader to store with the tripod together. Press the button to detach the spreader.



Detach



Insert

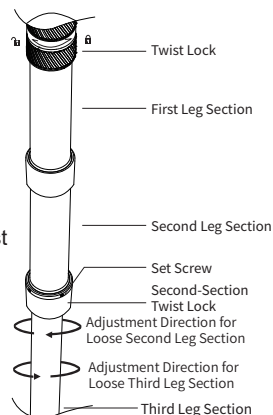
(5) Adjustment Guide for Loose Leg Section Where the Twist Lock Cannot Tighten Properly

1. Adjustment Instructions for Loose Second Leg Section:

Use a 1.5mm Allen key to loosen the four set screws on the second-section twist lock. Then, loosen the leg's twist lock, and rotate the second-section twist lock half a turn in the direction indicated by the diagram. Next, tighten the twist lock to check whether the issue is resolved. If the leg section is still loose, repeat the above steps until it is properly adjusted. Once the adjustment is complete, firmly tighten all four set screws.

2. Adjustment Instructions for Loose Third Leg Section:

Use a 1.5mm Allen key to loosen the four set screws on the second-section twist lock. Then, loosen the leg's twist lock, and rotate the second-section twist lock half a turn in the direction indicated by the diagram. Next, tighten the twist lock to check whether the issue is resolved. If the leg section is still loose, repeat the above steps until it is properly adjusted. Once the adjustment is complete, firmly tighten all four set screws.



Specifications

SVH15 Specifications	
Model	SVH15
Materials	Aluminum Alloy
Wdight(kg/lb)	3.7/8.2
Load Capacity(kg/lb)	4-5/8.8-33
Detachable Half-Bowl	✓
Height(mm/inch)	285/11.2
Half-Bowl Diameter (mm/inch)	75/3
Diameter(mm/inch)	90/3.5
Base screw Hole	UNC3/8-16
Operating Temperature	-40°C~+60°C
Damping Adjustment	Stepless Adjustment
Counterbalance	7+0 Steps
Tilt	-70°/+90°
Pan	360°
Handle	Dual Handle

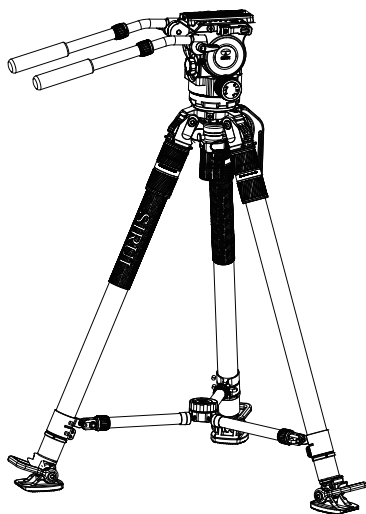
SVS75 Specifications	
Model	SVS75
Materials	Aluminum, Carbon Fiber
Wdight(kg/lb)	4.1/ 9.1
Load Capacity (kg/lb)	25 / 55.1
Maximun Working Height(cm/inch)	15 5/ 61
Minimun Working Height(cm/inch)	20.5/8.1
Closed Length (cm/inch)	7.5/ 29.5
Leg Sections	3 Sections
Feet Features	Horseshoe Feet, Dual Spikes
Spreader	Mid-Level Spreader
Tube size(mm/inch)	36/ 32/ 24(1.4/ 1.3/ 1.0)
Angles(without Mid-Level Spreader)	22°/50°/78°
Angles(with Mid-Level Spreader)	21°~36°

Cautions

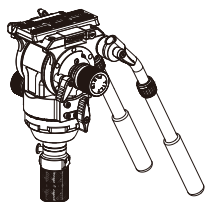
Do not force open the mid-level spreader when it moves not smoothly. Loosen the three twist locks and then try to open the mid-level spreader. Do not force open the mid-level spreader if it can't reach the horizontal position. Use the 3mm Allen key to loosen the screws at all three linking parts. Now the linking parts can move smoothly. Adjust the direction of the linking parts till the mid-level spreader can reach the horizontal position. Tighten the screws. Now it is the right angle. Detach the mid-level spreader. Pull the flip lock to check whether all the three legs can be extended and retracted smoothly.



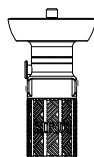
SVS75+SVH15视频脚架套装 使用手册



SVS75 + SVH15



SVH15



QH-75

前言

思锐SVS75一键升降摄像脚架搭配SVH15专业液压视频云台，配备75mm半球快拆手柄，拥有6项产品专利，疾速与强悍的完美结合，面向高品质摄像制作领域。更低的预算享受高端脚架云台的卓越性能，同类专业套装中性性价比更高。

主要特点

- (1) 阻尼调节，不仅可以无极调节并可在低温-40℃条件下正常使用。
- (2) 三脚架脚管角度调节，可以三挡固定调节和小范围无极调节两种选择使用中置可以使脚架更加稳定。
- (3) 三脚架脚管一件伸缩，只需要一个装置即可同时解锁锁定两节脚管，更方便省事。
- (4) 马蹄结构使三脚架更稳定，拆下马蹄后，三脚架可适应不同环境，而且可以适配滑轮等通用配件。
- (5) 脚架提手，提手上配有4MM六角扳手，拧动把手上的3/8螺丝即可拆下提手。
- (6) 75mm平台把手，不仅锁紧和释放快速，且不需要很大力锁紧。

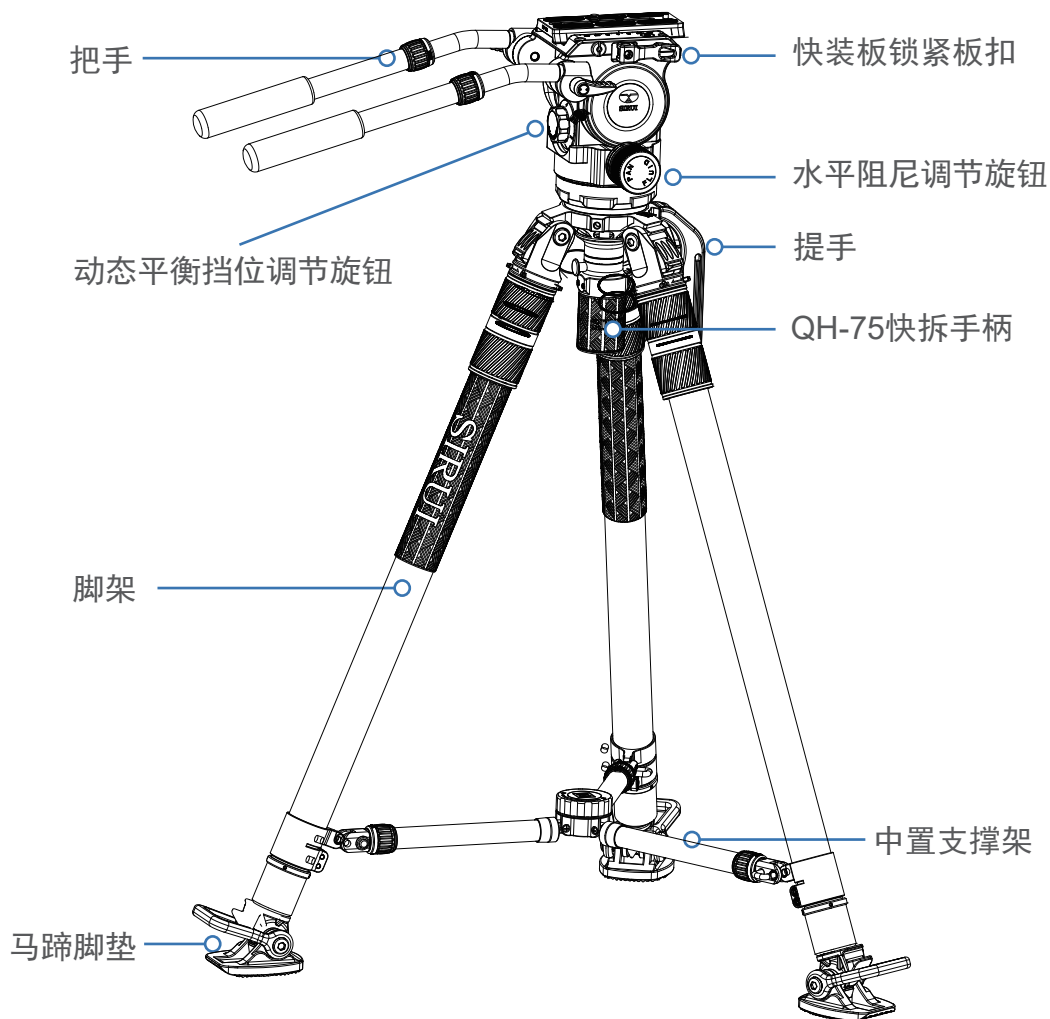
包装清单

SVS75+SVH15 专业版脚架套装



- | | | |
|------|--------------------|---------|
| ① 脚架 | ② 液压视频云台 | ③ 中置支撑架 |
| ④ 提手 | ⑤ QH-75 75mm半球快拆手柄 | ⑥ 脚架包 |

产品介绍



(1) 角度调节：

俯仰轴设有7档动态平衡，适配4~15kg承重的设备。-70°~+90°俯仰倾斜360°水平全景锁紧旋钮，向外拉可调整旋钮方向。



(2) NF阻断式液压阻尼设计：

俯仰轴和水平轴是独立的无级渐进式阻尼调节，灵活适配不同配重，调整阻尼强弱，从-到+，阻尼从弱到强。可在-40°C~60°C下稳定工作。



(3) 侧入式快装板：

安装：打开扳扣，侧入式放入设备，锁紧扳扣。

拆卸：打开扳扣，按下锁紧块，取出设备。

快装板有前后30mm的行程做配重调整，可使用长镜头。



打开扳扣



侧入式安装



锁紧扳扣

如需使用大疆稳定器的快装板，需把快装夹座下方的一个限位螺钉卸下。

(4) QH-75 75mm半碗快拆手柄：

SVH15云台可与QH-75半球快拆手柄拆分独立使用；
SVH15云台可用于滑轨，QH-75可搭配其他平底云台使用。



拆分：
转动手柄2圈，按下按钮即可快速拔出手柄。



安装：
直接插入快拆把手，逆时针转动2圈即可。

(5) 双把手：



解锁旋钮，可伸缩调节手柄长度。

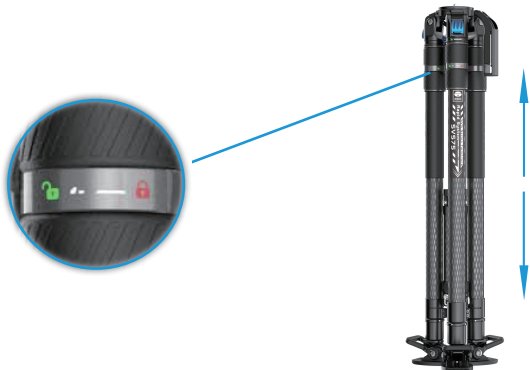


拧松旋钮，可调节手柄角度，提升操控手感。

SVS75 操作说明

(1) 一键升降：

将三个脚管上的锁紧旋钮按标识松开或者锁紧即可实现一键升降。



(2) 角度调节：

下压半自动角度调节按钮，上提脚管，向下压脚管至特定角度后，按钮可自动复位。三档角度调节22°/50°/78°

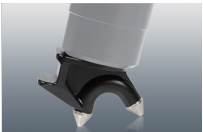


(3) 马蹄环/脚钉：

向上外拉马蹄环即可卸下马蹄环，露出双重脚钉。



马蹄

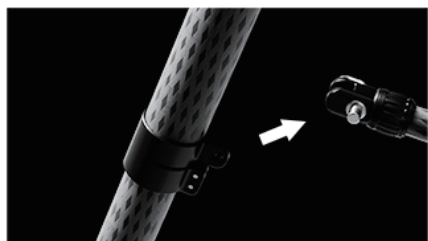


脚钉

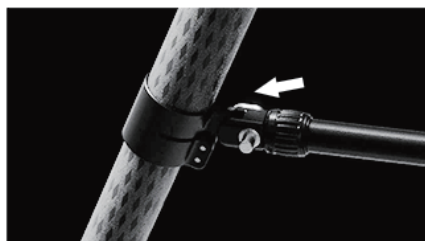
拆下马蹄后，内置的双重脚钉适用于松软地面。或搭载思锐DT-06滑轮等

(4) 中置支撑架：

按压按钮，扣在脚架上，转动脚管解锁旋钮，调整支撑架长度；解锁中置旋钮，便于与脚架一起收纳；按压按钮，可卸下支撑架。



拆卸



安装

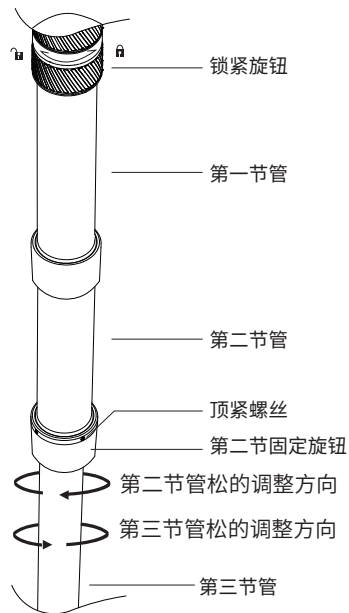
(5) 节管松动锁紧旋钮无法锁紧的调紧操作指引

1.第二节管松处理说明：

使用1.5mm六角扳手松开第二节固定旋钮的4颗顶紧螺丝，然后松开脚管的锁紧旋钮后按图示对应的箭头方向转动第二节固定旋钮半圈，然后锁紧锁紧旋钮测试是否调整好，如果没有，继续按上述动作操作，直至调整好，最后拧紧4颗顶紧螺丝。

2.第三节管松处理说明：

使用1.5mm六角扳手松开第二节固定旋钮的4颗顶紧螺丝，然后松开脚管的锁紧旋钮后按图示对应的箭头方向转动第二节固定旋钮半圈，然后锁紧锁紧旋钮测试是否调整好，如果没有，继续按上述动作操作，直至调整好，最后拧紧4颗顶紧螺丝。



产品参数

SVH15专业液压云台参数表	
产品型号	SVH15
材质	铝合金
自重(kg)	3.7
球台是否可拆	是
高度(mm)	285
球台直径(mm)	75
底座直径(mm)	90
底座螺孔	UNC 3/8-16
工作温度(°C)	-40至+60
阻尼调节	无极调节
动态平衡	1-7档
倾斜	-70°/+90°
水平	360°
承重范围(kg)	3kg-15kg
手柄	双手柄

SVS75 视频脚架参数表	
产品型号	SVS75
材质	铝、碳纤维
自重(kg)	4.1
承重(kg)	25
最大高度(mm)	1550
最小高度(mm)	205
收纳高度(mm)	740
球台直径(mm)	75
脚管节数	3
管径(mm)	36/32/24
不使用中置角度	22/50/78
使用中置角度	21-36
中置	有
把手	有
球台快拆组件(qh-75)	有
马蹄	有
脚钉	有

注意

当打开中置的过程中有牵制时不要强行打开中置，拧松三个旋钮再尝试打开中置。若此时中置无法到达水平位置不要强行按压中置，使用3mm扳手轻微松开三个脚管连接处的六角螺丝，此时连接处可以左右移动。调节三个连接处方向直到中置可以灵活滑动且能达到水平位置，稍微用力锁紧六角螺丝，此时三个连接处所成角度准确，取下中置，打开脚架扳扣伸缩脚管测试三个脚管是否顺滑。