



思锐

影像随心 思锐随行

广东思锐光学股份有限公司

物料名称：BCT系列3节管说明书
物料编号：BCT15-1
材质：100g双胶/CMYK
展开尺寸：360x210mm
成型尺寸：72x105mm

说明书正面(英文)

Professional Photographic Equipment

INSTRUCTIONS

BCT Series Professional Video Tripod with 3 Sections

Section	Min. Dia	Max. Dia	Min. Height	Max. Height	Weight	Load Capacity
BCT-2003	3	22.09	16.06	435/17.1	1000/63.0	750/29.5
BCT-2203	3	22.09	16.06	435/17.1	1000/63.0	750/29.5
BCT-3003	3	25.10	19.07	446/17.5	1000/63.0	750/29.5
BCT-3203	3	25.10	19.07	446/17.5	1000/63.0	750/29.5

GUANGDONG SIRUI OPTICAL CO.,LTD.
Add: The Third Industrial District, Wuguishan Town, Zhongshan City, Guangdong, China (Zip Code: 528458)
Tel: 86-760-88897373 Fax: 86-760-88207062
E-mail: info@sirui-photo.com Website: www.sirui.com

1. Know your tripod

2. Setting up the tripod on a flat, smooth surface

3. Retracting the tripod

4. Setting up the tripod on uneven ground

Attention

WARRANTY CARD INFORMATION

Dear SIRUI Customer, Thank you for your purchase of SIRUI Professional Products! SIRUI warrants that your purchase is free from defects in materials and workmanship under normal use during the Limited Warranty Period. The Warranty begins on the original date of purchase on your sales receipt and is not transferable. If service is required, a copy of the sales receipt must be included with an explanation of the problem.

Product	Warranty Length
Tripods / Monopods / Accessories	6 years
Humidity Control Cabinet (Cabinet)	3 years
Humidity Control Cabinet (Electronics)	3 years

Model: _____ Date: _____

Store: _____ Serial Number: _____

Warranty coverage can differ from region to region. Please see the contact information below for product registration, information and service for the region the product was purchased in.

SIRUI 6 (six) Year Limited Warranty (3 Year Warranty for Electronic Parts). This warranty shall be limited to repair, adjustment and/or replacement at SIRUI or its authorized distributors option, of defective parts, free of charge (except the cost of transportation to the distributor/service center). Responsibility is limited to the actual cost of the item. Call or Email with questions and service before sending any product to the center in your region. Below is a listing of contact information for Product Registration, Service Inquiries and Questions. SIRUI will not be responsible for expenses or inconveniences, or consequential damages to equipment, or by breach of any expressed or implied warranties.

Limitations: Warranty is not transferable. This warranty covers all defects encountered in normal use of the equipment and does not apply in the following cases: 1. If the equipment has been serviced by other than an authorized SIRUI Service Center. 2. Damage to the equipment is due to modification (including but not limited to, the removal of ballhead clamps), overloading, mishandling, abuse, accident, sand, corrosives, water damage or not following operating instructions. 3. No valid proof of purchase is provided. 4. Damage caused by acts of nature (including, but not limited to fires, floods or earthquakes).

Warranty coverage can differ from region to region. Please see contact information below for product registration, information and service for the region the product was purchased in.

Warranty Address and Contact Information: (Please contact the seller or the local distributor where the product was purchased for warranty issues or questions and before any product is sent.)

1. Guangdong SIRUI Optical Co., Ltd.
The Third Industrial District, Wuguishan Town, Zhongshan City, Guangdong, China
Tel: 0086-760-88897373 Fax: 0086-760-88207062
http://www.sirui.com E-mail: info@sirui-photo.com
Service Hotline: 0086-400 830 2299
Complaint Hotline: +86-181 6563 9388
(Monday to Friday: 9:15am-12:15pm, 14:00pm-18:00pm)

2. SIRUI USA, LLC
Add: 29 Commerce Court Verona, NJ 07044
www.sirui.com
Service: Toll Free 866-373-8820 E-mail: info@sirui.com
FOR PRODUCTS PURCHASED IN THE USA PLEASE SEE: For full details on USA Warranty Terms and Limitations: https://www.siruiusa.com/warranty.html To register products: https://www.siruiusa.com/product-registration.html

3. European Service Center
Add: SIRUI Optical GmbH • Ernst-Augustin-Str.1a • 12489 Berlin • Germany
Phone: +49 30 991 94 90 00 • Email: info@siruioptical.eu

说明书背面(中文)

影像随心 思锐随行

使用说明

BCT系列双级专业摄像三脚架

Section	Min. Dia	Max. Dia	Min. Height	Max. Height	Weight	Load Capacity
BCT-2003	3	22.09	16.06	435/17.1	1000/63.0	750/29.5
BCT-2203	3	22.09	16.06	435/17.1	1000/63.0	750/29.5
BCT-3003	3	25.10	19.07	446/17.5	1000/63.0	750/29.5
BCT-3203	3	25.10	19.07	446/17.5	1000/63.0	750/29.5

广东思锐光学股份有限公司
地址: 广东省中山市五桂山第三工业区 邮编: 528458
电话: 0760-88897373 传真: 0760-88207062 服务热线: 400 830 2299
邮箱: info@sirui-photo.com 网址: www.sirui.com

1. 认识三脚架

2. 在平整的地面打开脚架

3. 收起脚架

4. 在复杂的地面打开脚架

1. 认识三脚架

2. 在平整的地面打开脚架

3. 收起脚架

4. 在复杂的地面打开脚架

注意事项:

保修卡

尊敬的客户:

感谢您购买思锐的产品! 在正常使用过程中, 如果因器材本身的材料及工艺出现质量问题, 思锐将会提供免费的保修服务。在需要保修服务时, 请您提供保修卡和购买凭证(收据或发票, 须有商家盖章)。思锐公司售后服务热线: 400 830 2299 投诉电话: 181 6563 9388 (仅限工作日 8:15-12:15, 14:00-18:00)

产品名称	保修期限
脚架	6 年
云台	
防潮柜本体	
电子部分	3 年

产品型号: _____ 购买日期: _____

商店名称: _____ 商店电话: _____

商店地址: _____

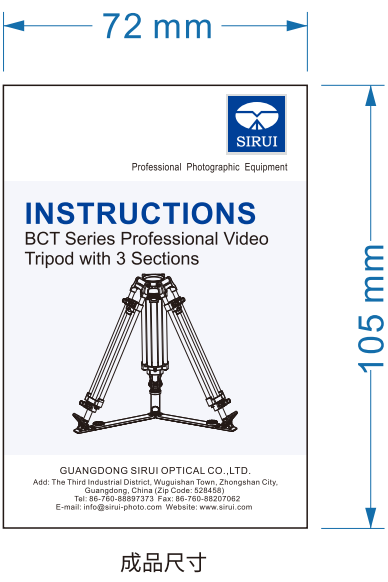
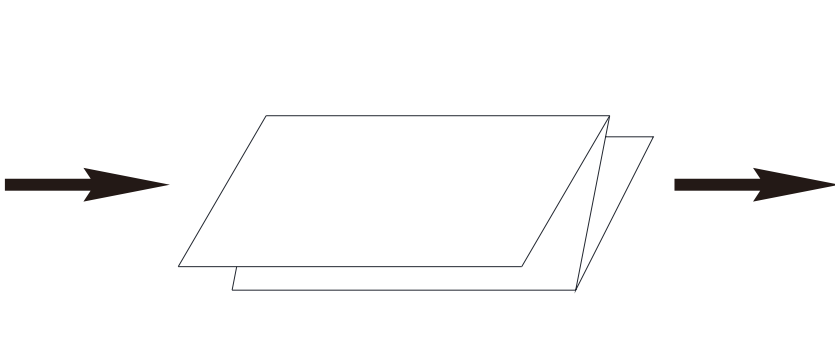
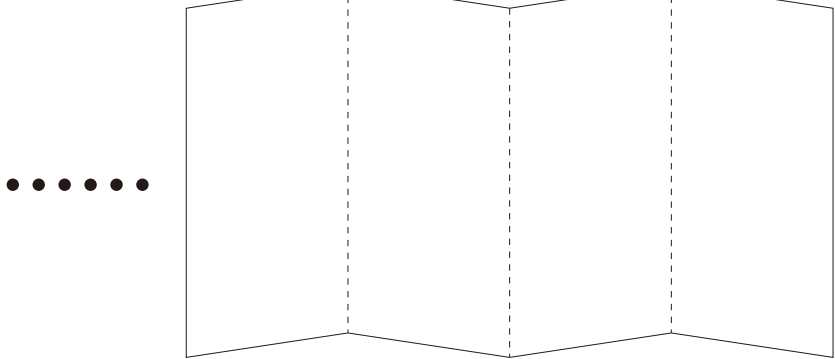
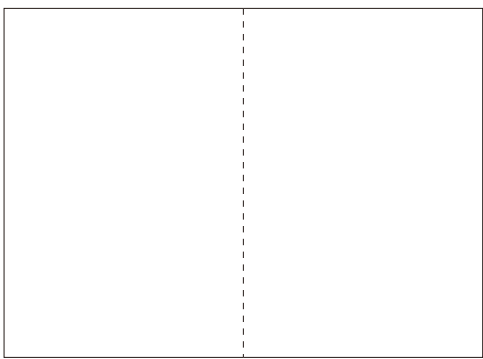
商店盖章: _____

顾客须知:

(1) 思锐产品, 享受6年免费保修(电子部分为3年), 保修时间从购买之日起算。
(2) 所保产品, 必须是在思锐正规授权的经销商或电子商务处购买。
(3) 寄件时请贴上“维修”标签, 请先到思锐服务中心, 待电话或邮件、商家盖章后, 思锐公司再派员取件。一般性故障在7个工作日内完成维修并寄回。
(4) 因使用不当、人为损坏、不可抗力等原因造成的故障, 恕不提供免费维修服务。
(5) 以下情况不在保修范围:
① 超过保修期限的;
② 在非正规授权经销商处购买的;
③ 在未报思锐授权的代理商或维修中心维修过的;
④ 由于不正当操作、意外事件、自然灾害等导致的故障或损伤。

※ 本保修卡只限在中国大陆使用

说明书折叠方法:



包装工程师: 彭少章

翻译:

审核:

批准: