




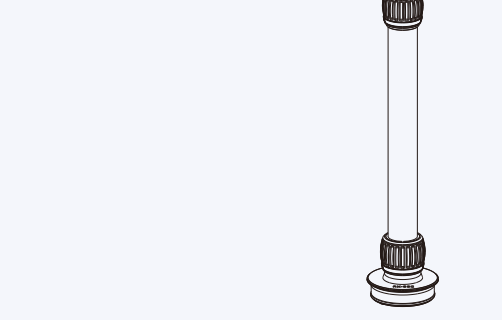
物料名称：RX-66C说明书
物料编号：YCM50-1
材质：100g双胶/CMYK
展开尺寸：360x210mm
成型尺寸：72x105mm



Professional Photographic Equipment

INSTRUCTIONS

RX-66C Center Column



GUANGDONG SIRUI OPTICAL CO.,LTD.
 Add: The Third Industrial District, Wuguishan Town, Zhongshan City, Guangdong, China (Zip Code: 528458)
 Tel: 86-760-8897373 Fax: 86-760-88207062
 E-mail: info@sirui-photo.com Website: www.sirui.com

RX-66C Data Chart

Section	Max Height	Max Weight	Max Load
1	321/11	660/26.0	380/15.0
2	321/11	660/26.0	380/15.0

1. Know your RX Center Column (RX-66C) (As shown in Fig. 1)

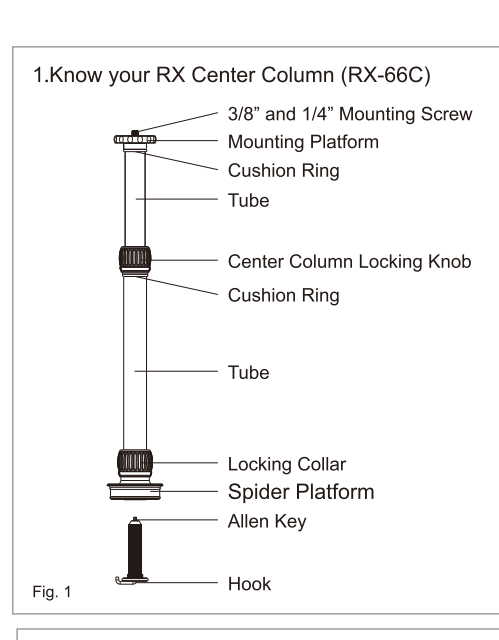
2. Attaching the Center Column onto the Tripod

Remove the flat platform from the RX tripod by loosening the 3 screws on the spider. Unscrew and remove the Hook/Allen Key from the bottom of the Center Column. Place the Spider Platform into the spider of the RX. Use the Allen Key on the end of the Hook to tighten the 3 screws on the spider. Screw the Hook/Allen Key back into the bottom of the Center Column.

You can adjust the height of the Center Column by raising or lowering it on the spider. Loosen the Locking Collar and position it at the desired height.

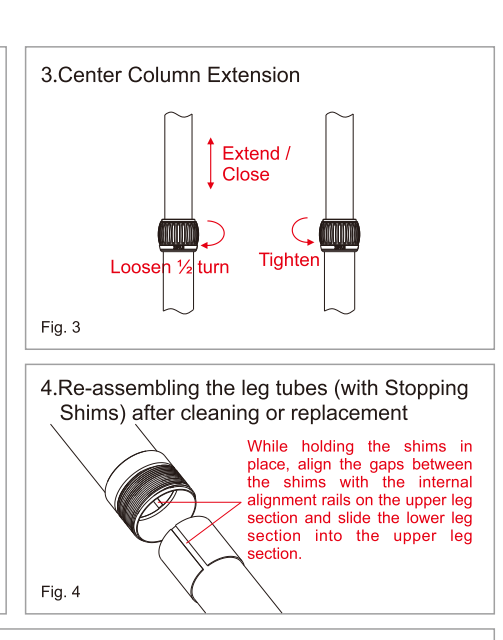
To extend the Center column to its maximum height, loosen the Rubber Locking Ring and lift the upper tube until it stops. Tighten the Rubber Locking Ring. Next, loosen the Locking Collar and lift the lower tube until it stops. Tighten the Locking Collar.

1. Know your RX Center Column (RX-66C)



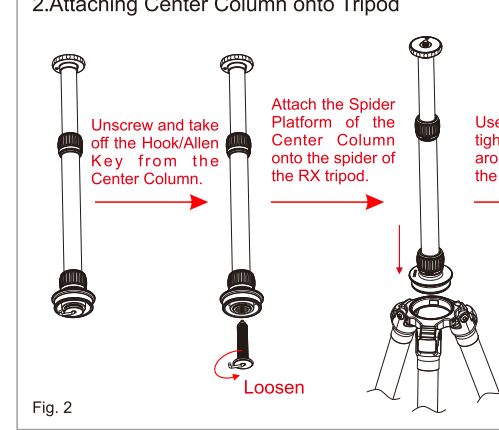
Labels: 3/8\" data-bbox="215 15 400 415"/>

3.Center Column Extension



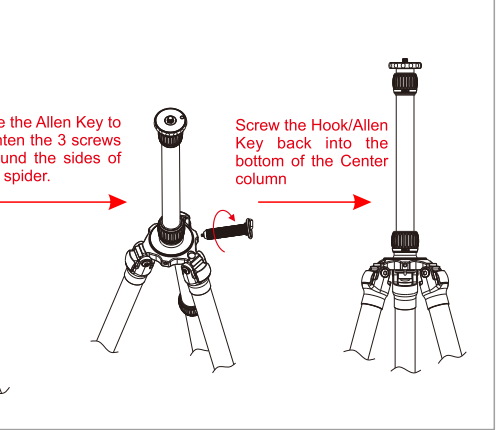
Labels: Extend / Close, Loosen 1/2 turn, Tighten

2.Attaching Center Column onto Tripod



Labels: Unscrew and take off the Hook/Allen Key from the Center Column, Attach the Spider Platform of the Center Column onto the spider of the RX tripod, Use the Allen Key to tighten the 3 screws around the sides of the spider, Screw the Hook/Allen Key back into the bottom of the Center column

4.Re-assembling the leg tubes (with Stopping Shims) after cleaning or replacement



Labels: While holding the shims in place, align the gaps between the shims with the internal alignment rails on the upper leg section and slide the lower leg section into the upper leg section

1. Know your RX Center Column (RX-66C) (As shown in Fig. 1)

2. Attaching the Center Column onto the Tripod

Remove the flat platform from the RX tripod by loosening the 3 screws on the spider. Unscrew and remove the Hook/Allen Key from the bottom of the Center Column. Place the Spider Platform into the spider of the RX. Use the Allen Key on the end of the Hook to tighten the 3 screws on the spider. Screw the Hook/Allen Key back into the bottom of the Center Column.

You can adjust the height of the Center Column by raising or lowering it on the spider. Loosen the Locking Collar and position it at the desired height.

To extend the Center column to its maximum height, loosen the Rubber Locking Ring and lift the upper tube until it stops. Tighten the Rubber Locking Ring. Next, loosen the Locking Collar and lift the lower tube until it stops. Tighten the Locking Collar.

3.Center Column Extension (As shown on Fig. 3)

4. Re-assembling the leg tubes (with Stopping Shims) after cleaning or replacement

The SIRUI RX-66C center column is easy and convenient to re-assemble after cleaning or replacing the Stopping Shims (As shown in Fig. 4).

Place the 2 shims into the reference holes on the lower leg section, hold the shims and align the gaps between the shims with the internal alignment rails on the upper leg section and slide the lower leg section into the upper leg section.

5. The hook under the center column can be used for holding a heavy bag for added stability.

Attention:

- Do not exceed the recommended load limit of the tripod / ball head / center column. (Please refer to product specifications).
- Please make sure that the locks are securely tightened when in use.
- Please keep from high temperatures and direct exposure to bright sunlight for extended periods of time.
- Please do not leave the equipment alone in a public place, which can be an inconvenience or hazard to others.
- To protect your camera gear, please remove it from the tripod / ball head / center column when transporting from place to place.
- Please use a soft towel with warm water and mild soap to clean the locking system and gliding parts when necessary. Towel dry before storing the product.
- Under most situations, there is no need to lubricate any parts of this product. The addition of most lubricants will gum up the mechanisms and reduce their normal gliding characteristics. Please call or email us if you have any questions or special needs.
- Please keep this product away from all electrical power sources.

Dear SIRUI Customer,

Thank you for your purchase of SIRUI Professional Products! SIRUI warrants that your purchase is free from defects in materials and workmanship under normal use during the Limited Warranty Period. The Warranty begins on the original date of purchase on your sales receipt and is not transferable. If service is required, a copy of the sales receipt must be included with an explanation of the problem.

Product	Warranty Length
Tripods / Monopods / Accessories	6 years
Humidity Control Cabinet (Cabinet)	3 years
Humidity Control Cabinet (Electronics)	3 years

Model: _____ Date: _____

Store: _____ Serial Number: _____

Warranty coverage can differ from region to region.

Please see the contact information below for product registration, information and service for the region the product was purchased in.

SIRUI 6 (six) Year Limited Warranty (3 Year Warranty for Electronic Parts).

This warranty shall be limited to repair, adjustment and/or replacement at SIRUI or its authorized distributors option, of defective parts, free of charge (except the cost of transportation to the distributor/service center).

Warranty is limited to the actual cost of the item. Call or Email with questions and service before sending any product to the center in your region. Below is a listing of contact information for Product Registration, Service Inquiries and Questions. SIRUI will not be responsible for expenses or inconveniences, or consequential damages to equipment, or by breach of any expressed or implied warranties.

Limitations:

Warranty is not transferable.

This warranty covers all defects encountered in normal use of the equipment and does not apply in the following cases:

- If the equipment has been serviced by other than an authorized SIRUI Service Center.
- Damage to the equipment is due to modification (including but not limited to, the removal of ballhead clamps), overloading, mishandling, abuse, accident, and/or corrosives, water damage or not following operating instructions.
- No valid proof of purchase is provided.
- Damage caused by acts of nature (including, but not limited to fires, floods or earthquakes).

Warranty coverage can differ from region to region. Please see contact information below for product registration information and service for the region the product was purchased in.

Warranty Address and Contact Information:

(Please contact the seller or the local distributor where the product was purchased for warranty issues or questions and before any product is sent.)

1. Guangdong SIRUI Optical Co., Ltd.
 The Third Industrial District, Wuguishan Town, Zhongshan City, Guangdong, China
 Tel: 0086-760-88897373 Fax: 0086-760-88207062
 Http://www.sirui.com E-mail: info@sirui-photo.com
 Service Hotline: 0086-400 830 2299

2. SIRUI USA, LLC
 Add: 29 Commerce Court Verona, NJ 07044
 www.siruiusa.com
 Service: Toll Free 866-373-0829 E-mail: service@sirui.com
 FOR PRODUCT'S PURCHASED IN THE USA PLEASE SEE:
 For full details on USA Warranty Terms and Limitations:
 https://www.siruiusa.com/warranty.html
 To register products: https://www.siruiusa.com/product-registration.html

3. Focus Nordic AB
 For technical support, service or repairs, please contact:
 Sweden: info@focusnordic.se www.focusnordic.se
 Norway: info@focusnordic.no www.focusnordic.no
 Denmark: info@focusnordic.dk www.focusnordic.dk
 Finland: info@focusnordic.fi www.focusnordic.fi
 Iceland: info@focusnordic.is www.focusnordic.is
 Latvia: info@focusnordic.lv www.focusnordic.lv
 Estonia: info@focusnordic.ee www.focusnordic.ee
 Lithuania: info@focusnordic.lt www.focusnordic.lt
 Poland: info@focusnordic.pl www.focusnordic.pl

4. TSE Imaging BV
 Add: Argonweg 135, 1362AD Almere, The Netherlands
 Telephone: +31 (0)38 8450348 E-mail: service@tse-imaging.nl
 (Exclusive Distributor for Netherlands, Belgium, Luxembourg)
 www.sirui-photo.nl

5. 대영테크놀로지
 한국 총판, 기술지원 및 보정서비스 제공.
 서울특별시 중구 남대문로 10, 1층
 Tel: 02-753-3304 Fax: 02-774-9093
 www.sirui.co.kr loweprokr@gmail.com

CAUTION

Please remove the camera from the tripod when changing the position of the tripod. Do not place the tripod, with camera attached, over your shoulder or carry the tripod horizontally by the legs. Strong shaking may cause damage to the screw in the recording plate and/or the camera. Please extend the center column from big section to small section, close the center column from small section to big section.

Specifications are subject to change without notice.

Dear SIRUI Customer,

Thank you for your purchase of SIRUI Professional Products! SIRUI warrants that your purchase is free from defects in materials and workmanship under normal use during the Limited Warranty Period. The Warranty begins on the original date of purchase on your sales receipt and is not transferable. If service is required, a copy of the sales receipt must be included with an explanation of the problem.

Product	Warranty Length
Tripods / Monopods / Accessories	6 years
Humidity Control Cabinet (Cabinet)	3 years
Humidity Control Cabinet (Electronics)	3 years

Model: _____ Date: _____

Store: _____ Serial Number: _____

Warranty coverage can differ from region to region.

Please see the contact information below for product registration, information and service for the region the product was purchased in.

SIRUI 6 (six) Year Limited Warranty (3 Year Warranty for Electronic Parts).

This

保修卡

尊敬的顾客：
感谢您购买思锐的产品！在正常使用过程中，如果因器材本身的材料或工艺出现质量问题，思锐将会提供免费的维修服务。在需要保修服务时，请提供本保修卡和购买凭证（收据或发票，须有商家盖章）。
思锐公司售后服务热线：400 830 2299

产品名称	保修期限
脚架	6年
云台	
防潮柜本体	
电子部分	3年

产品型号：_____ 购买日期：_____
商店名称：_____ 商店电话：_____

商店地址：_____

商店盖章：_____

顾客须知：

- (1) 思锐产品，享5年免费保修（电子部分为3年），保修期从从购买之日起算。
- (2) 所有保修产品，必须是在思锐正式授权的经销商或电子商务场所购买。
- (3) 寄回思锐工厂维修的，请先拨打思锐售后服务电话，待确认故障后，思锐公司将派员取货，一般性故障可在7个工作日内完成维修并寄回。
- (4) 所有的退换货，都必须先与当地的售后、技术支持部联系下并致函到思锐工厂才能进行，具体可参照使用说明书或致电售后服务热线。
- (5) 以下情况不在保修范围：
 - ① 超过保修期限的；
 - ② 在非指定地点授权经销商处购买的；
 - ③ 在未获思锐授权的代理商或维修中心维修过的；
 - ④ 由于不正当操作、意外事件、自然灾害导致的故障或损坏。

※本保修卡只限在中国大陆使用

维修登记表A

用户姓名	
用户电话	
用户地址	
邮 编	
故障维修描述	
维修人员签名	
维修时间	

维修登记表B

用户姓名	
用户电话	
用户地址	
邮 编	
故障维修描述	
维修人员签名	
维修时间	

使用说明
RX-66C中轴

广东思锐光学股份有限公司
地址：广东省中山市五桂山第三工业区 邮编：528458
电话：0760-88897373 传真：0760-88207062 服务热线：400 830 2299
邮箱：info@sirui-photo.com 网址：www.sirui.com

Ⓜ	重量 mm	kg
Ⓜ	总重量 mm	0.5
Ⓜ	最大承重 mm	380
Ⓜ	最小高度 mm	660
Ⓜ	最大高度 mm	28
Ⓜ	最小直径 mm	32
Ⓜ	最大直径 mm	2

1.认识RX中轴（RX-66C）

图1

2.中轴与脚架装配

图2

1.认识RX中轴（RX-66C）（如图1所示）

2.中轴与脚架装配

与R-X系列脚架配套使用，装配简便。中轴底部设计有弹簧挂钩；挂钩拆卸后，可当作六角扳手工具使用。（如图2所示）

中轴的高度可上下调节，松开中轴上的锁紧旋钮调节所需高度即可。
松开锁紧旋钮，将中轴上中心管拉到最高处，达到最大的高度后锁紧锁紧旋钮。然后松开平台座上的锁紧旋钮，把中轴的下心管向上拉，直到无法拉动后锁紧锁紧旋钮。

3.中心管伸缩（如图3所示）

4.中心管与止滑片装配

先将两块止滑片在下一级中心管对应的孔上安装好，然后把下一级中心管上的两块止滑片之间的间隙位置对准上一级中心管内筋条的位置插入便能装上。

5.中轴下方的挂钩可放承载重物，以提高稳定性。

3.中心管伸缩

图3

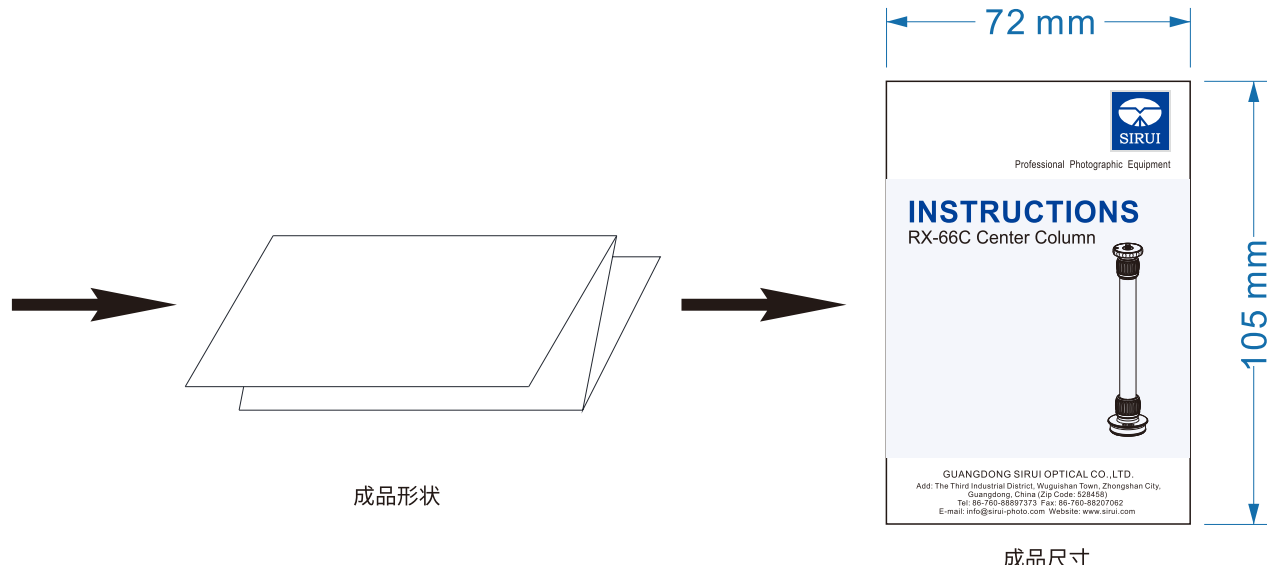
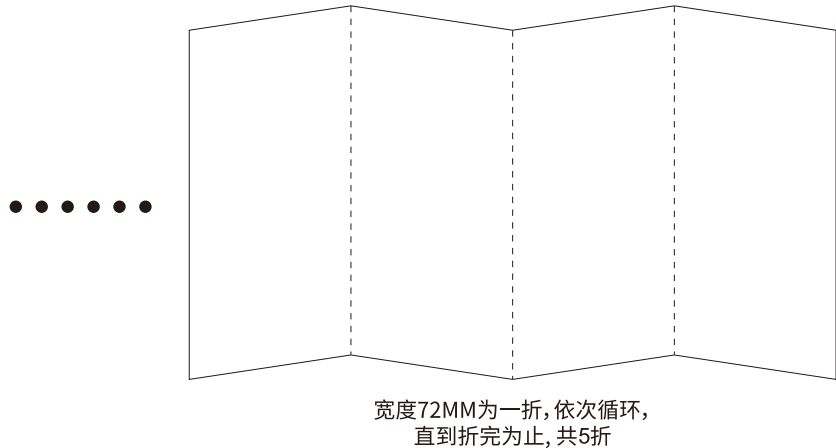
4.中心管与止滑片装配

图4

注意事项：

- ⚠ 不要超过最大的制定负重（请参考个别产品说明）。
- ⚠ 当使用产品时，时常紧固其安全装置。
- ⚠ 切勿在温度低于零下40摄氏度及高于100摄氏度的环境下使用，请在潮湿/沙地/布满尘埃的环境下使用后，请及时清洁，不建议在海水中使用。
- ✳ 切勿将产品长时间放在太阳下曝晒及避免高温环境，例如长时间放在车箱内或玻璃后。
- 👤 在公众地方使用时，如在没有人照料下，请勿留下设备而引致其他公众不便。
- 👤 建议在运输过程中，将设备（例如相机）从脚架上移除。
- 💧 使用和清洁剂及柔软毛巾清洁，将尘埃及沙粒从所有锁紧及活动部件清除。
- ⚡ 除非有需要，此设备无需定期加润滑油，如确实需要时，请使用标准润滑油或黄油。
- ⚡ 为自身安全着想，切勿将产品接触任何电源。

思锐公司保留对产品升级和由于产品升级所带来更多参数的权利，请以实物为准，恕不另行通知。但除在产品外包装和说明书标注的参数外，其他参数不作为承诺依据。

[illegible]

包装工程师：彭少章

审核：

翻译:

批准: