



影像随心 思锐随行

使用说明

P-306/P-326

独脚架



广东思锐光学股份有限公司
地址：广东省中山市五桂山第三工业区
电话：0760-88897373 传真：0760-88207062 服务热线：400 830 2299
邮编：528458
邮箱：528458@163.com
网址：www.sirui-photo.com

P-306/P-326参数

	最大负重 kg	自身重量 kg	最小高度 mm	最大高度 mm	最小管径 mm	最大管径 mm	节数
P-306	8	0.5	395	1560	16	32	6
P-326	10	0.4	395	1560	16	32	6

图纸名称：思锐P-36系列说明书

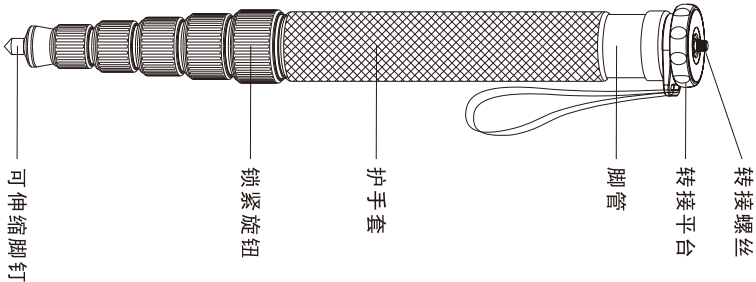
物料编号：PP20-2

制图：彭少章

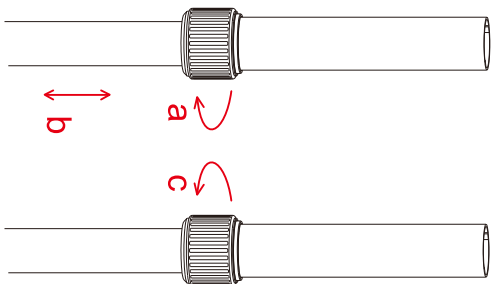
审核：

批准：

1



2



4

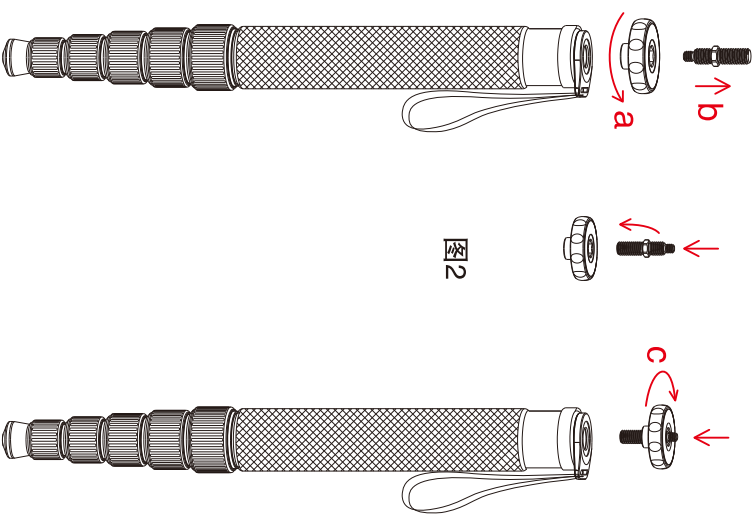
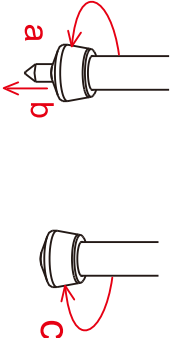


图2

图1

图3

3



1. 认识独脚架

2. 伸延脚管

按图示方向a，同时或分别将锁紧旋钮转动1/4~1/2圈，然后将脚管拉出您所需要的长度，再按图示方向c，分别转动各个锁紧旋钮锁紧相应的脚管。

3. 可伸缩脚钉

如图a方向旋转橡胶垫时可伸出不锈钢钉，c方向旋转可收回不锈钢钉藏于橡胶垫内。

4. 可倒转安装3/8”或1/4”固定螺丝

如图1所示，按a方向松开转接平台即可旋出转接螺丝，把调换后的转接螺丝放入到转接平台内六角孔里面，然后按图3所示c方向旋紧即可实现3/8”与1/4”两端的调用。

注意事项：

- ⚠ 不要超过最大的制定负重（请参考个别产品说明）。
- 👤 当使用产品时，把手腕带套入手腕。
- ⚠ 切勿在温度低于零下40摄氏度及高于100摄氏度使用。当在潮湿/沙地/布满尘埃的环境下使用后，请记将产品弄干及清洁，不建议在海水中使用。
- ✳ 切勿将产品长时间放在太阳下曝晒及避免高温环境，例如长时间放在车棚内或玻璃后。
- 👤 在公众地方使用时，如没有人照料下，切勿留下设备而引致其他公众不便。
- 👤 建议在运输过程中，将设备（例如相机）从脚架上移除。使用温和清洁剂及柔软毛巾清洁，将尘埃及沙粒从所有锁制及活动部件清除。
- 👤 除非有需要，此设备无需定期加添润滑油，如确实需要时，请使用标准润滑油或油蜡。
- ⚡ 为自身安全着想，切勿将产品接触任何电源。

温馨提醒

请勿将未收锁的独脚架里而未拆卸的相机一起寄红运。伸延脚管时，请从最大管径的脚管到最小管径的脚管的顺序伸展。收回脚管时，请从最小管径的脚管到最大管径的脚管的顺序收缩。

思锐公司保留产品升级和由于产品升级而变更各参数的权利，请以实物为准，恕不另行通知。

印刷品上如有印刷错误或模糊方面的错漏如造成不便，敬请包涵。

尊敬的顾客：

感谢您购买思锐的产品！在正常使用过程中，如因器材本身的材料及工艺出现质量问题，思锐将会提供免费维修服务，在需要保修服务时，请提供本保修卡和购买凭证（收据或发票，须有商家盖章）。思锐公司售后服务热线：400 830 2299

产品名称		保修期限
脚架	云台	6年
防潮柜本体		
电子部分		3年

产品型号：_____ 购买日期：_____

商店名称：_____ 商店电话：_____

商店地址：_____

商店盖章：_____

顾客须知：

- 思锐产品，享受6年免费保修（电子部分为年），保修时间从购买之日起。
- 所修产品，必须是在思锐正式授权的经销商或电子产品售后服务商。
- 需寄回思锐工厂维修的，请先拨打思锐服务电话，待确认故障后，思锐公司承担来回运费。故障故障可在个工作日内完成维修并寄回。
- 防潮柜的保修：请先确定发生问题的部件，把该部件卸下单独寄回思锐工厂维修即可，具体可参照使用说明书或致电服务热线。
- 以下情况不在保修范围：
 - 超过保修期限的；
 - 在非思锐正式授权经销商处购买的；
 - 在未报思锐授权的代理商或维修中心维修过的；
 - 由于不正当操作、意外事件、自然灾等导致的故障或损伤。

※ 本保修卡只限在中国大陆使用

维修登记表A

用户姓名	
用户电话	
用户地址	
邮编	
故障维修描述	
维修人员签名	
维修时间	

维修登记表B

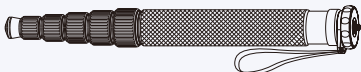
用户姓名	
用户电话	
用户地址	
邮编	
故障维修描述	
维修人员签名	
维修时间	



Professional Photographic Equipment

INSTRUCTIONS

P-306/P-326 Monopod



Guangdong SIRUI Optical Co., Ltd.

Address: The Third Industrial District, Wuguishan Town, Zhongshan City, Guangdong, China
Tel: 0086-760-88897373 Fax: 0086-760-88207062 Service Hotline: 0086-400-8302299
E-mail: info@sirui-photo.com http://www.sirui.com P.C.: 528458

P-306/P-326 Data Chart

		Section	Max Dia mm/inch	Min Dia mm/inch	Monopod Max H mm/inch	Monopod Min H mm/inch	Weight kg/lb	Load kg/lb
P-306		6	32/1.3	16/0.6	1560/61.4	395/15.6	0.5/1.1	8/17.6
P-326		6	32/1.3	16/0.6	1560/61.4	395/15.6	0.4/0.9	10/22.0

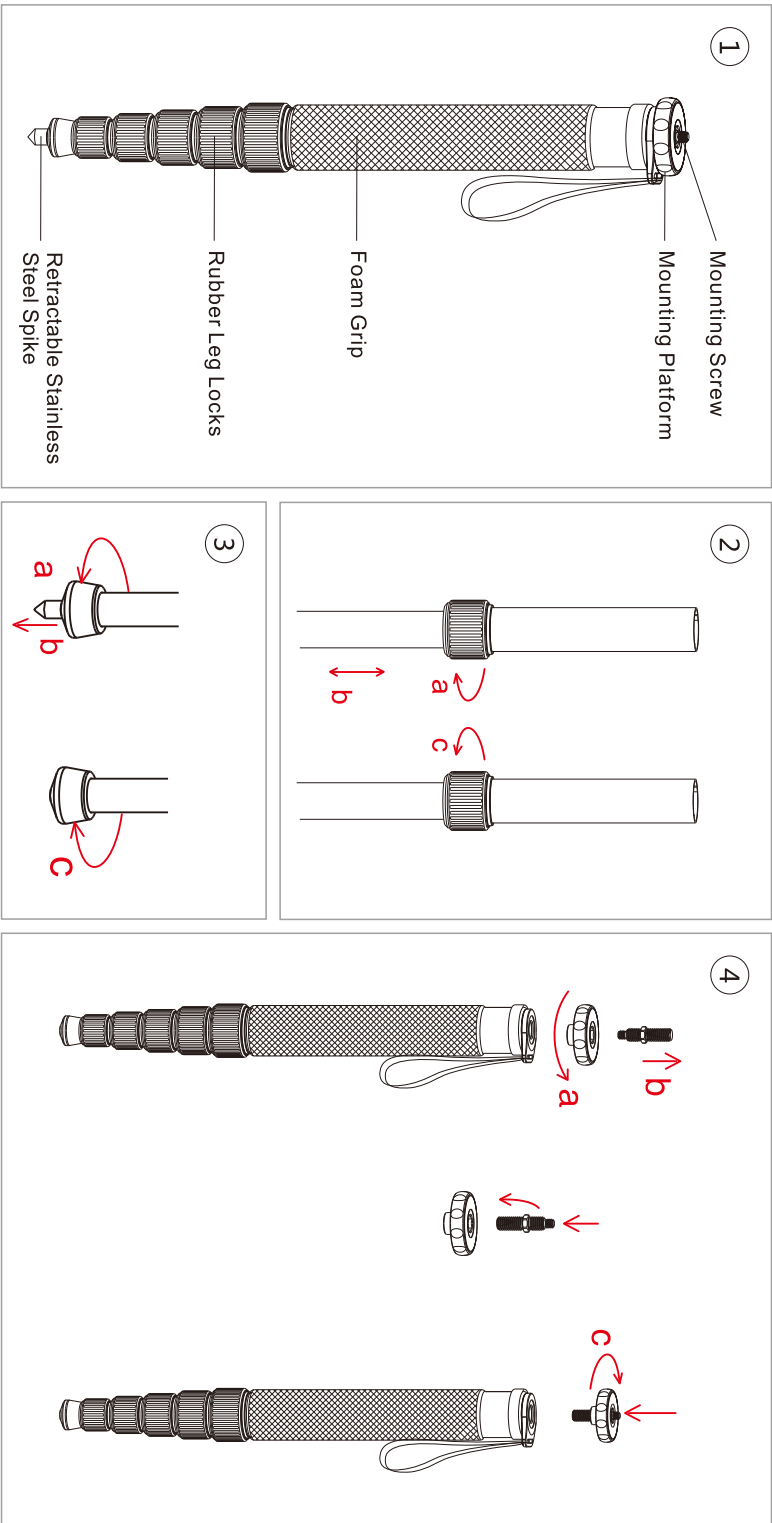
图纸名称：思锐P-36系列说明书

物料编号：PP20-2

制图：彭少章

审核：

批准：



1. Know your Monopod

2. Leg Extension and Closing

As shown in Figure 2, twist the rubber leg locks about 90 degrees in a clockwise direction ("a"), adjust the leg sections to the desired length and tighten the rubber leg locks by turning them in a counter-clockwise direction ("c").

3. Retractable Stainless Steel Spike

Twist the Rubber foot in a counter-clockwise direction ("a"), until the spike is fully extended; to retract the spike, turn in a clockwise direction ("c") until the spike is hidden.

4. Converting the Mounting Screw from 3/8" to 1/4"

Most camera and lens tripod sockets require a 1/4" screw, while many ball heads and medium format cameras require a 3/8" screw. As shown in Figure 4, loosen the Mounting Platform by turning it counter-clockwise ("a"), then twist the Mounting Screw out completely ("b"), flip the screw, twist it back into the monopod (turn clockwise) and hand tighten with the Mounting Platform ("c").

Attention :

Do not exceed the recommended load limit of the head and/or monopod. (Please refer to product specifications.)

Please make sure that the locks are securely tightened when in use. For added safety, please put your wrist through the wrist strap when using the monopod.

This product should not be used in environments that exceed the following conditions: (-40 ~ +100°C, -40 ~ +212°F). And, when used in damp, dirty or dusty environments, please clean and dry thoroughly after use, to assure proper functioning in the future. It is not recommended to expose this product to saltwater. If exposed, please clean with mild soap and warm water and towel dry.

Please keep from high temperatures and direct exposure to bright sunlight for extended periods of time.

Please do not leave the equipment alone in a public place, which can be an inconvenience or hazard to others.

To protect your camera gear, please remove it from the tripod/ball head when transporting from place to place.

Please use a soft towel with warm water and mild soap to clean the locking system and gliding parts when necessary. Towel dry before storing the monopod.

Under most situations, there is no need to lubricate any parts of this product. The addition of most lubricants will gum up the mechanisms and reduce their normal gliding characteristics. Please call or email us if you have any questions or special needs.

Please keep this product away from all electrical power sources.

CAUTION!



Do not place the monopod with camera attached over your shoulder or carry the monopod horizontally by the leg. Strong shaking may cause damage of the screw in the mounting plate and/or the camera. Please extend the legs from the biggest tube to smallest tube, close the legs from the smallest tube to biggest tube to avoid leg joint bushing damage.

Specifications are subject to change without notice.

WARRANTY CARD INFORMATION

Dear SIRUI Customer,
Thank you for your purchase of SIRUI Professional Products!
SIRUI warrants that your purchase is free from defects in materials and workmanship under normal use during the Limited Warranty Period. The Warranty begins on the original date of purchase on your sales receipt and is not transferable. If service is required, a copy of the sales receipt must be included with an explanation of the problem.

Product	Warranty Length
Tripods / Monopods / Accessories	6 years
Humidity Control Cabinet (Cabinet)	
Humidity Control Cabinet (Electronics)	3 years

Model: _____ Date: _____

Store: _____ Serial Number: _____

Warranty coverage can differ from region to region. Please see the contact information below for product registration, information and service for the region the product was purchased in.

SIRUI 6 (six) Year Limited Warranty (3 Year Warranty for Electronic Parts).
This warranty shall be limited to repair, adjustment and/or replacement at SIRUI or its authorized distributors option, of defective parts, free of charge (except the cost of transportation to the distributor/service center).
Responsibility is limited to the actual cost of the item. Call or Email with questions and service before sending any product to the center in your region. Below is a listing of contact information for Product Registration, Service Inquiries and Questions. SIRUI will not be responsible for expenses or inconveniences, or consequential damages to equipment, or by breach of any expressed or implied warranties.

Limitations:

Warranty is not transferable.
This warranty covers all defects encountered in normal use of the equipment and does not apply in the following cases:
1. If the equipment has been serviced by other than an authorized SIRUI Service Center.
2. Damage to the equipment is due to modification (including but not limited to, use of the equipment for purposes other than intended, including abuse, incident, sand, corrosives, water damage" or not following operating instructions.
3. No valid proof of purchase is provided.
4. Damage caused by acts of nature (including, but not limited to fires, floods or earthquakes).
*V-Series Waterproof/Dustproof models – Warranty coverage can differ from region to region. Please see contact information below for product registration, information and service for the region the product was purchased in.

Warranty Address and Contact Information:

(Please contact the seller or the local distributor where the product was purchased for warranty issues or questions and before any product is sent.)

1. Guangdong SIRUI Optical Co., Ltd.

The Third Industrial District, Wuguishan Town, Zhongshan City, Guangdong, China
Tel: 0086-760-88897373 Fax: 0086-760-88207062
E-mail: info@sirui-photo.com
Service Hotline: 0086-400 830 2298

2. SIRUI USA, LLC

Add: 29 Commerce Court Verona, NJ 07044
www.sirui.com
Service Toll Free 866-373-0829 E-mail: info@sirui.com
FOR PRODUCTS PURCHASED IN THE USA PLEASE SEE:
For full details on USA Warranty Terms and Limitations:
www.sirui.com/warranty.html
To register products: www.sirui.com/product-registration.html

3. Focus Nordic AB

For technical support, service or repairs, please contact:
Sweden: info@focusnordic.se www.focusnordic.se
Denmark: info@focusnordic.dk www.focusnordic.dk
Finland: info@focusnordic.fi www.focusnordic.fi
Iceland: info@focusnordic.is www.focusnordic.is
Latvia: info@focusnordic.lv www.focusnordic.lv
Estonia: info@focusnordic.ee www.focusnordic.ee
Lithuania: info@focusnordic.lt www.focusnordic.lt
Poland: info@focusnordic.pl www.focusnordic.pl

4. SIRUI Europe GmbH (European Service Center)

Add: Fredericistr. 2, 14059 Berlin, Germany
Phone: +49 221 94 99 54-50 E-mail: info@sirui.de
(Please contact the seller or your local distributor for warranty issues.)

5. TSE Imaging BV

Add: Argonnev 135, 1362AD Almere, The Netherlands
Telephone: +31 (0)36 2450048 E-mail: service@tse-imaging.nl
(E-mail: Distributor for Netherlands, Belgium, Luxembourg)
www.sirui-photo.nl

6. 대원엔터프라이즈

한국 총판: 기술지원 및 비즈니스 계층:
서울특별시 중구 남대문로 10, 18
Tel: 02-752-3304 Fax: 02-774-9903
www.sirui.co.kr loweprokr@gmail.com